

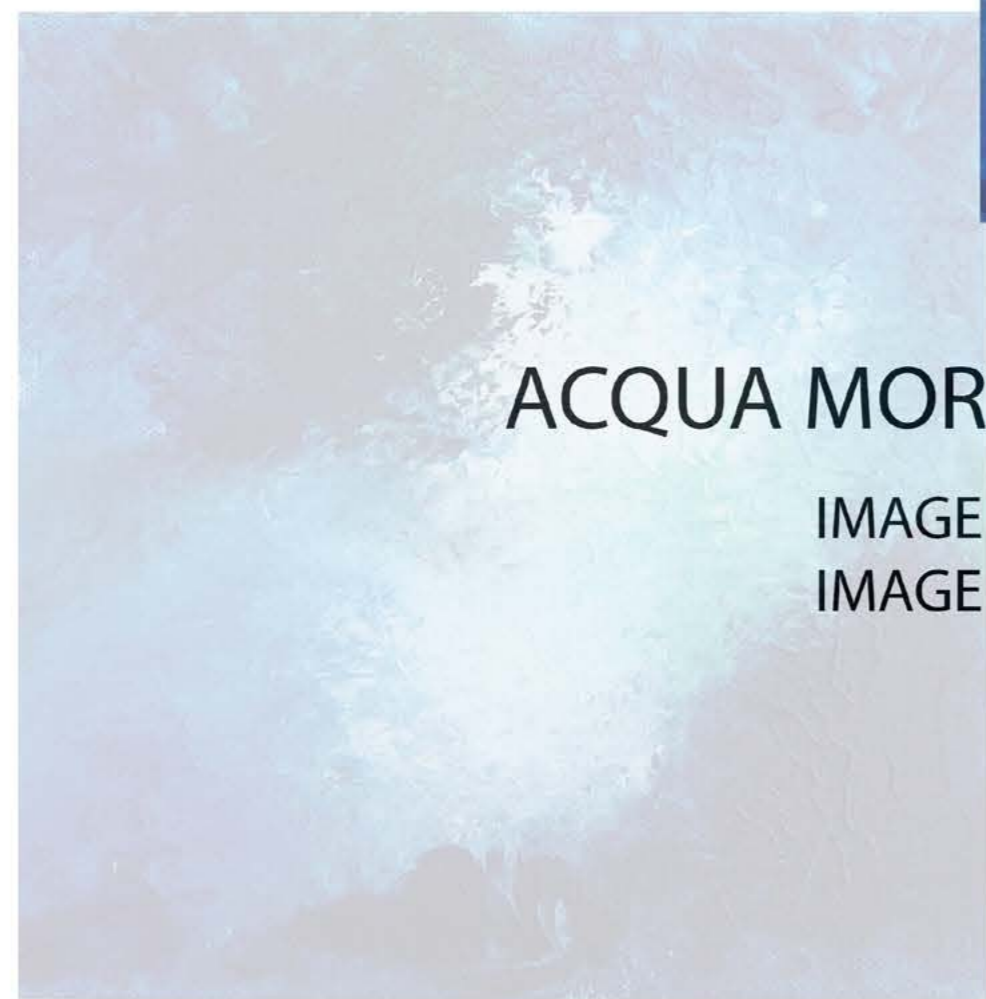
IDEAS , AESTHE- TICS & ARTICULATION OF ARCH- ITECTURE

Lauren Alexandra Ward



CONTENTS.

10 IMAGE PORTFOLIO
LIVERPOOL UNIVERSITY MArch (Full Time)



ACQUA MORTAL

IMAGE 1
IMAGE 2



ARCHITECTURE OF DEATH

IMAGE 4
IMAGE 5
IMAGE 6



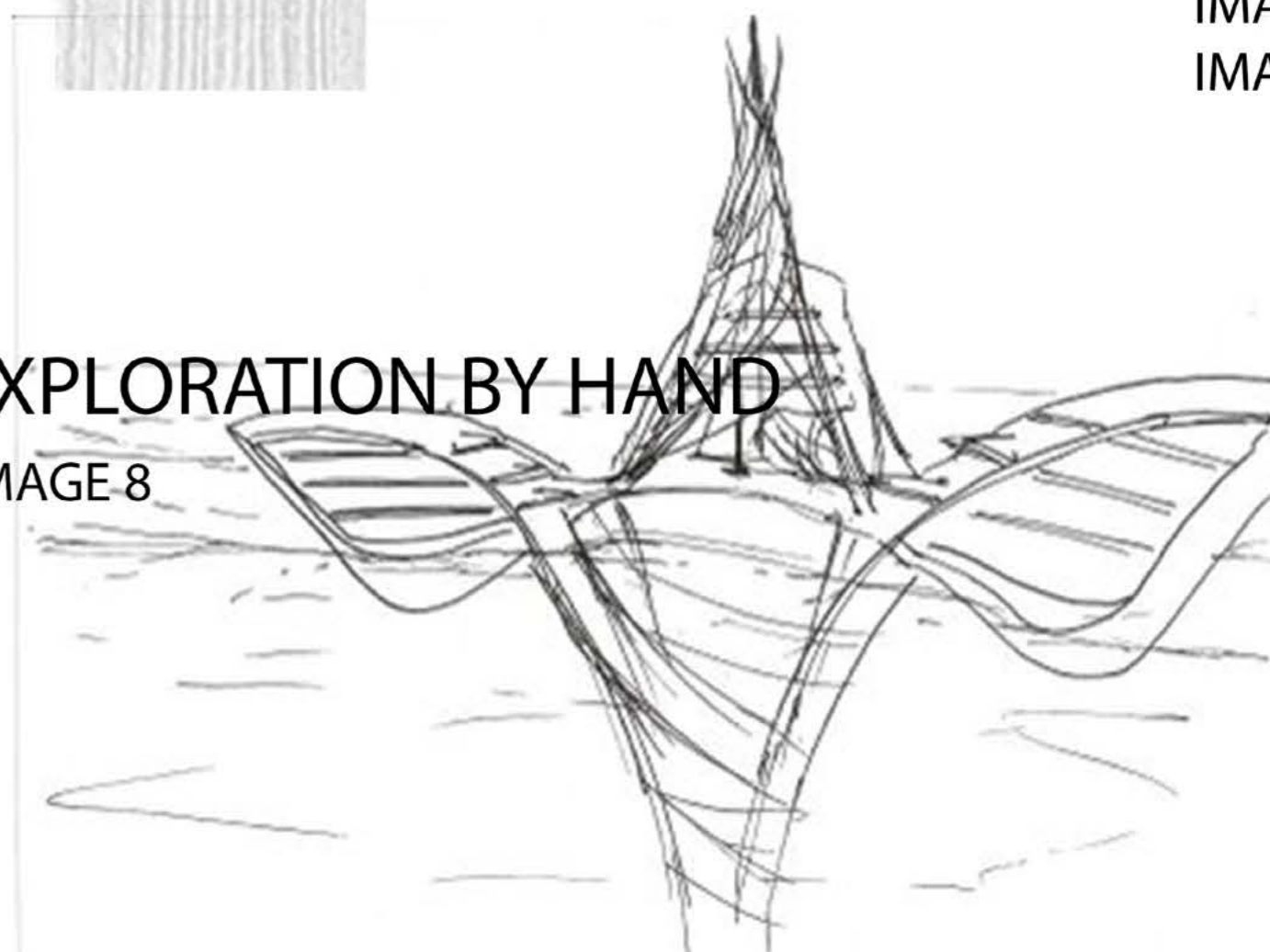
TECHNICAL EXPLORATION

IMAGE 3
IMAGE 7



EXPLORATION BY HAND

IMAGE 8



LYSTER
GRILLET+
HARDING
ARCHITECTS

PART 1
IMAGE 9
IMAGE 10

IMAGE ¹
ACQUA MORTAL

To design and implement a 'man in nature' ethos by constructing an aqua bath that is related to the social history of swimming . An idea that corresponds with sacred pools of greece.

A civic space in the heart of Nottingham , an absolute space . The modern pool that encourages congregation between city and citizens.



IMAGE 2

Below are sectional explorations of the Civic Bathhouse. The industrial context of the Bathhouse expresses the 'working life' of a citizen .
This contrasts the concept of water which strips the human mind and body and creates a civic democracy, it is one of those rare places which is unalienating , non - consumptionist and utopian in its nature.



TECHNICAL EXPLORATION

This image is part of a technical detailing panel of the civic bathhouse project.

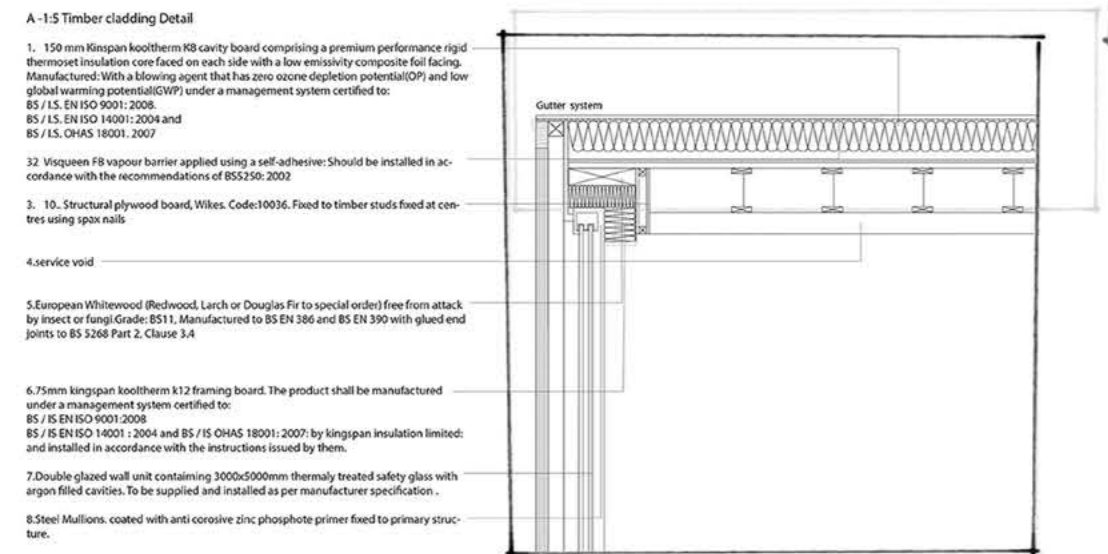
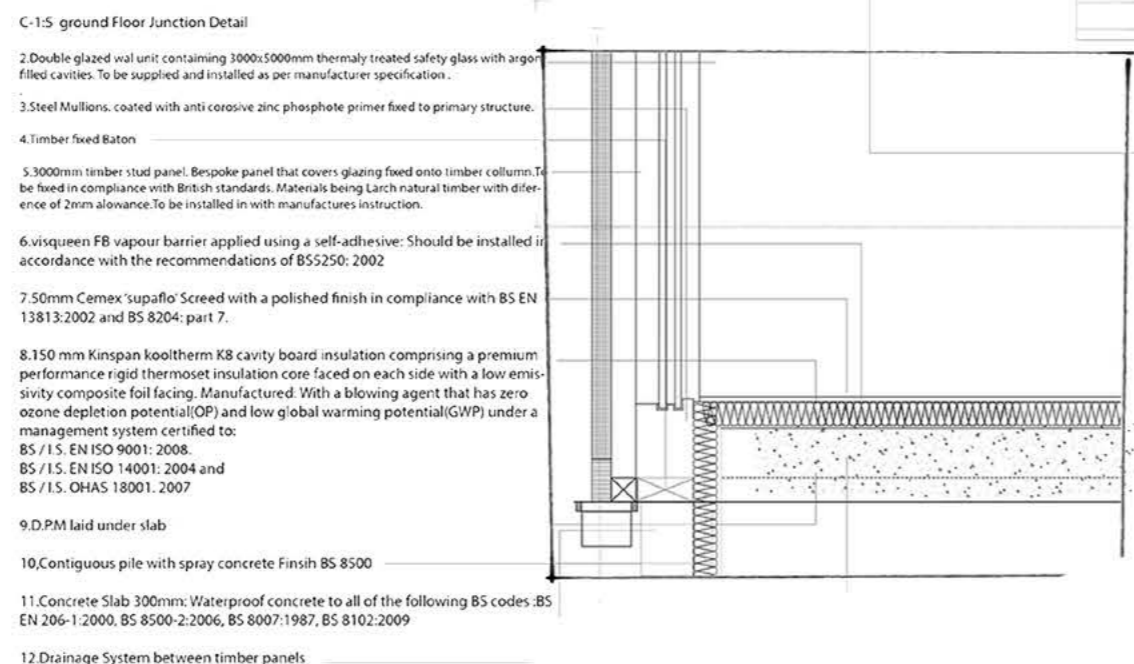
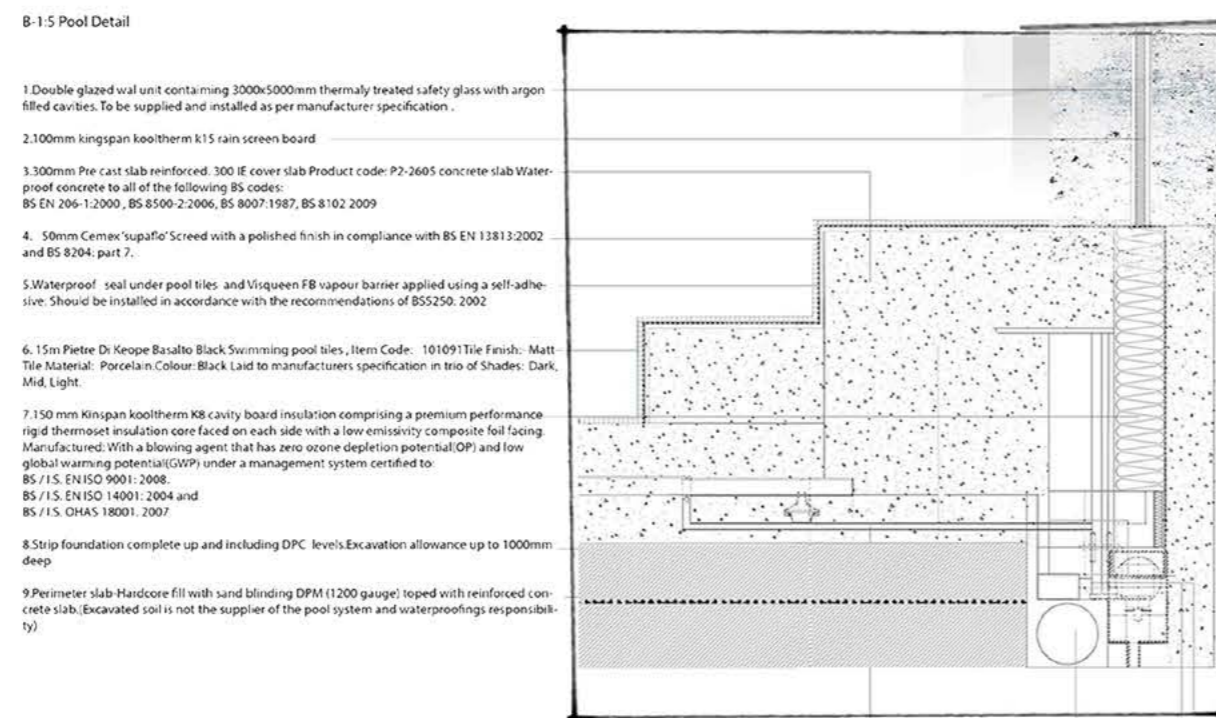


IMAGE 3



Water need to circulate through a filtering system, to remove dirt and debris. During normal operation, water flows to the filtering system through two or more main drains at the bottom of the pool and multiple skimmer drains around the top of the pool.

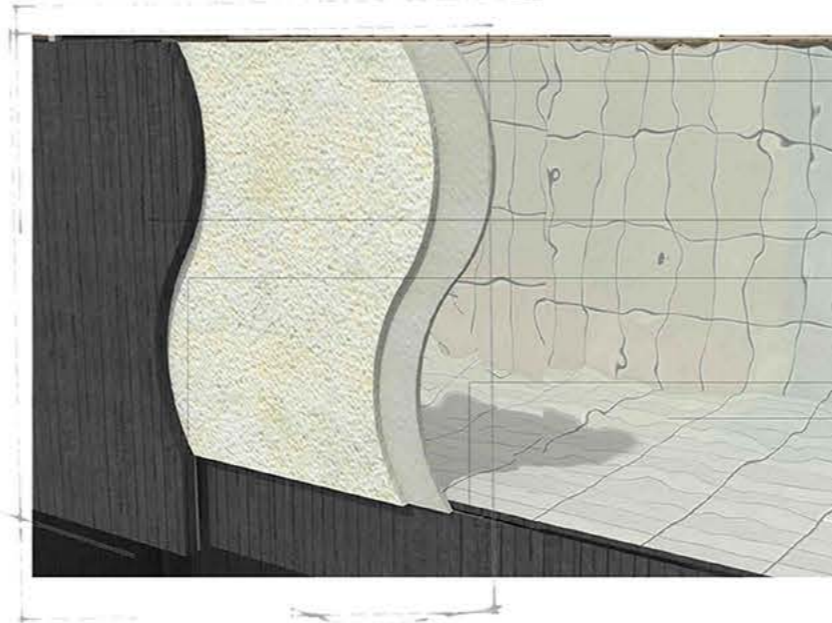
Filter 200mm diameter; Galvanised steel drain The main filter system usually located on the highest point in the pool, (o the entire pool surface and drainage system slants away from the pool system.

Valve 200 15mm switch accessed on the surface of the pool through mechanical system in waterproof encasing

Antivortex covers (a cover that diverts the flow of water to prevent a dangerous vortex from forming).

vacuum ports, used in pool cleaning. These ports attach to pool vacuum cleaners, which suck the water from the drain outside the envelope of the structure between 5-20m away from the build

Paramount suppliers are the best for in-floor cleaning and circulation systems that work automatically to minimise maintenance time All to be installed as instructed.



External surface of the pool is coated in a coat of sikkens Cetol Novotech which provides fu stecticide and UV protection. A coat of novot applied to the external concrete which gives and erosion shield.

Concrete Oversite with top channel and Pez backfill

Bottom concrete ring beam

Insulated Pool Wall - Walls are insulated with 1 in 230mm that consists of wool and foil with boarding finishes.

Underslay

6. 15m Pietre Di Krope Basalto Black Swimming tiles, Item Code: 101691 Tile Finish: Matt Tile Material: Porcelain Colour: Black Lead to r turers specification in trio of Shades:Dark, Mi



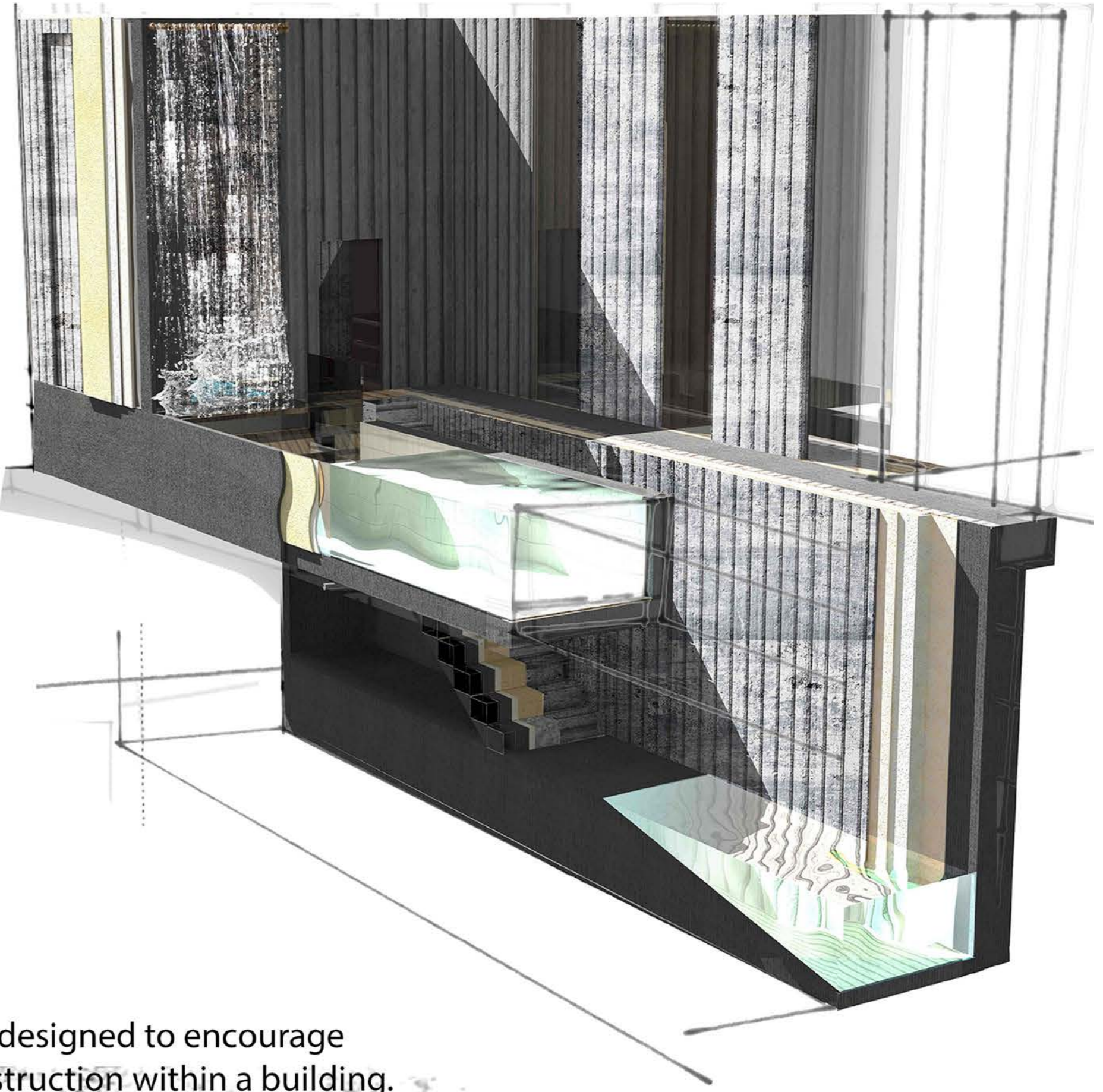
1. 150 mm Kinspan kooltherm K8 cavity board comprising a premium performance rigid thermoset insulation core faced on each side with a low emissivity composite foil facing. Manufactured With a blowing agent that has zero ozone depletion potential(OP) and low global warming potential(GWP) under a management system certified to: BS / I.S. EN ISO 9001: 2008, BS / I.S. EN ISO 14001: 2004 and BS / I.S. OHSAS 18001: 2007

Precast concrete 300mm; Waterproof concrete to all of the following BS codes: BS EN 206-1:2000, BS 8500-2:2006, BS 8007:1987, BS 8102:2009

3. Visqueen FB vapour barrier applied using a self-adhesive. Should be installed in accordance with the recommendations of BS5250: 2002

4. 50mm Cemex 'supaflo' Screed with a polished finish in compliance with BS EN 13813:2002 and BS 8204: part 7.

25mm thick Pool Tiles manufactured - Lifting pool Floor LTD with working load of 150kg/m² in accordance with the requirements of BS EN 13451-11:2004.



This technical exploration was designed to encourage us to think about layers of construction within a building.

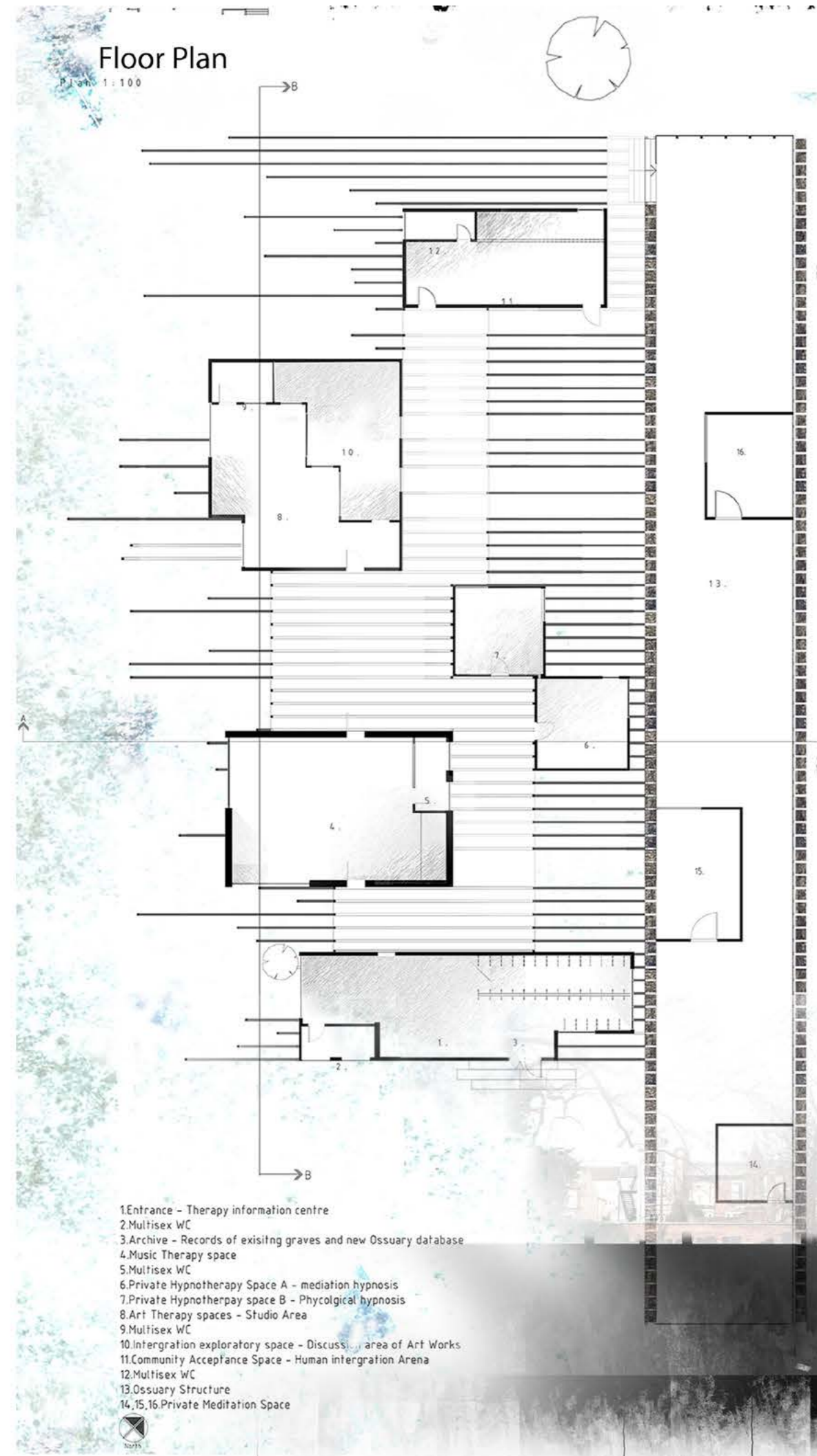


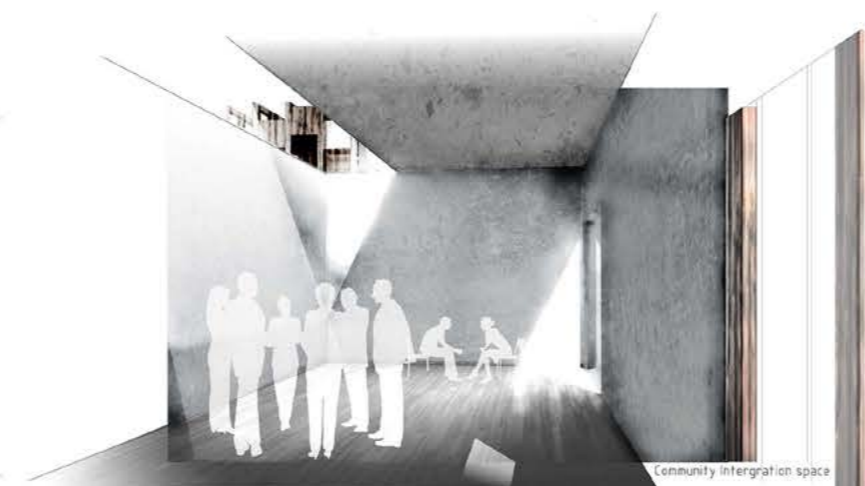
IMAGE 4

For this project we were asked to produce our own brief based on **ARCHITECTURE OF DEATH**

BRIEF

To design an ossuary, that encourages the populace to accept the concept of death. The structure is to encourage the repopulation of the damaged site whilst creating architecture to deal with death.

IMAGE 56



Different therapy techniques would be used to help deal people understand and deal with death

The ossuary was a solution to removing and exuming all the gravestones and creating a space that poetically placed the new chests back onto the ground using light.

The ossuary structure overshadoweds a new therapy centre that intergrated within the urban area allowing the site to integrate back into the city.



Interior Ossuary exploration

1:20 SOUTH FACEADE DETAIL

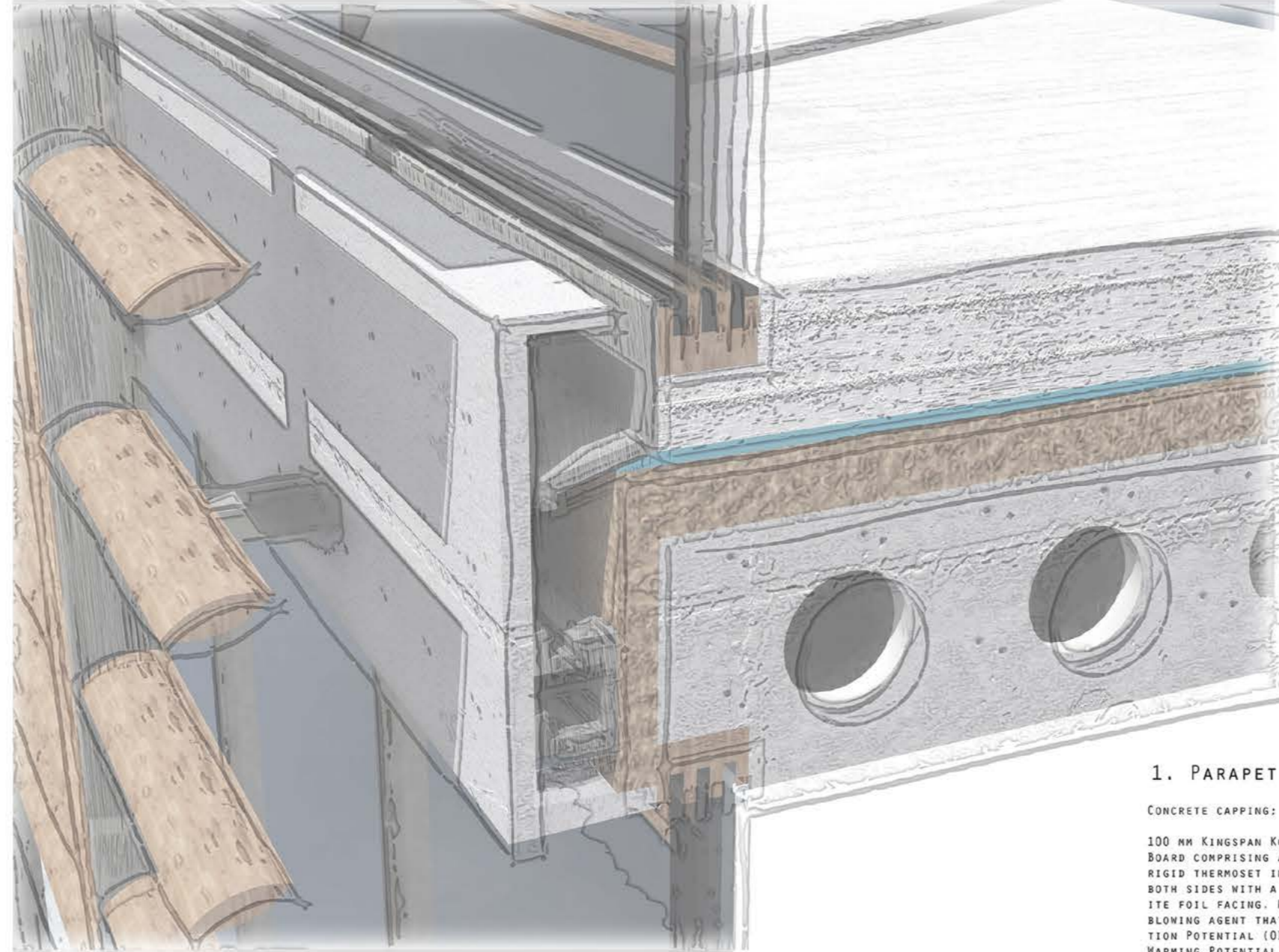
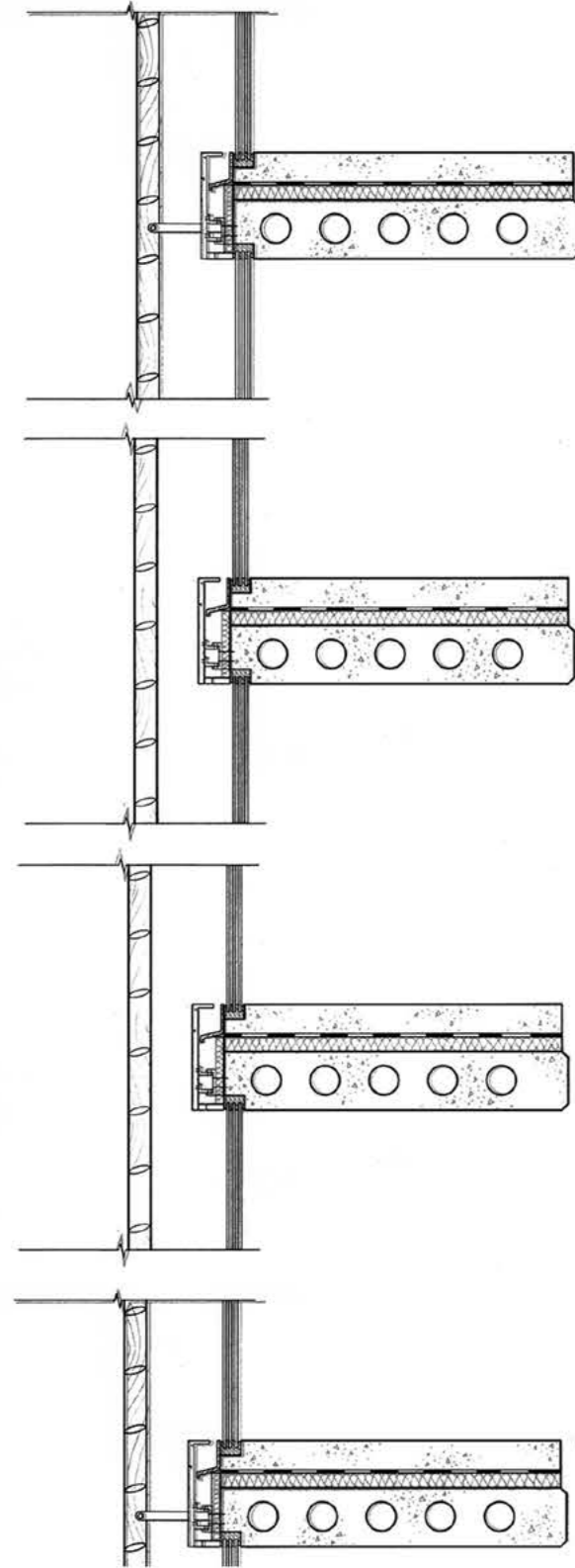
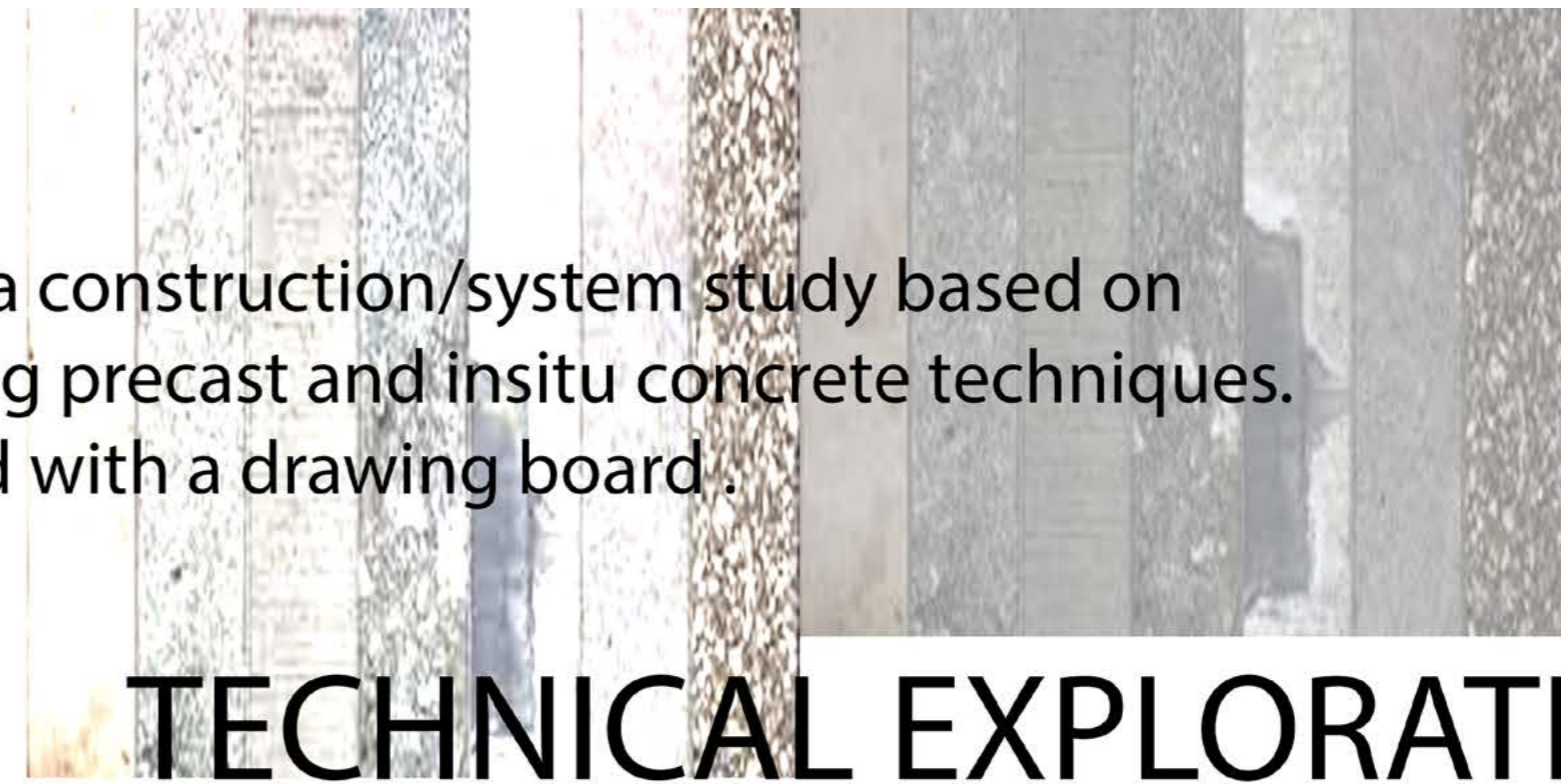
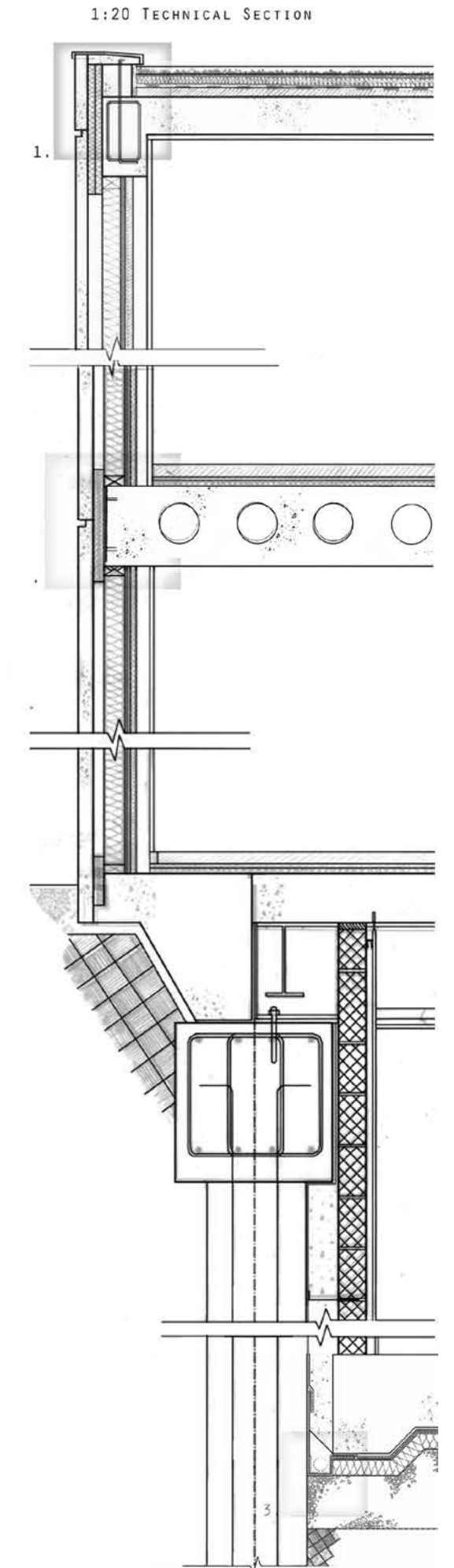


IMAGE 7

This image is a partial section of a construction/system study based on a multi-storey live/work unit using precast and insitu concrete techniques. The details below were produced with a drawing board.



TECHNICAL EXPLORATION



1. PARAPET DETAIL 1:5

CONCRETE CAPPING: BS 8110 AND EN 1992

100 MM KINGSPAN KOOLTHERM K8 CAVITY BOARD COMPRISING A PREMIUM PERFORMANCE RIGID THERMOSET INSULATION CORE FACED ON BOTH SIDES WITH A LOW EMISSIVITY COMPOSITE FOIL FACING, MANUFACTURED WITH A BLOWING AGENT THAT HAS ZERO OZONE DEPLETION POTENTIAL (ODP) AND LOW GLOBAL WARMING POTENTIAL (GWP); UNDER A MANAGEMENT SYSTEM CERTIFIED TO BS / I.S. EN ISO 9001: 2008, BS / I.S. EN ISO 14001: 2004 AND BS / I.S. OHSAS 18001: 2007

100MM SOLID SYNSTONE CUSTOM 3000X1500MM PANELS, SMOOTH MATTE FINISH, COLOUR: 920 SMOKE. TO BE SUPPLIED AND INSTALLED AS PER THE MANUFACTURER'S LATEST PUBLISHED DATA.

10MM STRUCTURAL PLYWOOD BOARD, WICKES, CODE: 110036. FIXED TO TIMBER STUDS PLACED @ 600MM CENTRES USING SPAX NAILS

100MM KINGSPAN KOOLTHERM K15 RAINSCREEN BOARD

VISOQUEEN FB VAPOUR BARRIER APPLIED USING A SELF-ADHESIVE; SHOULD BE INSTALLED IN ACCORDANCE WITH THE RECOMMENDATIONS OF BS5250: 2002.

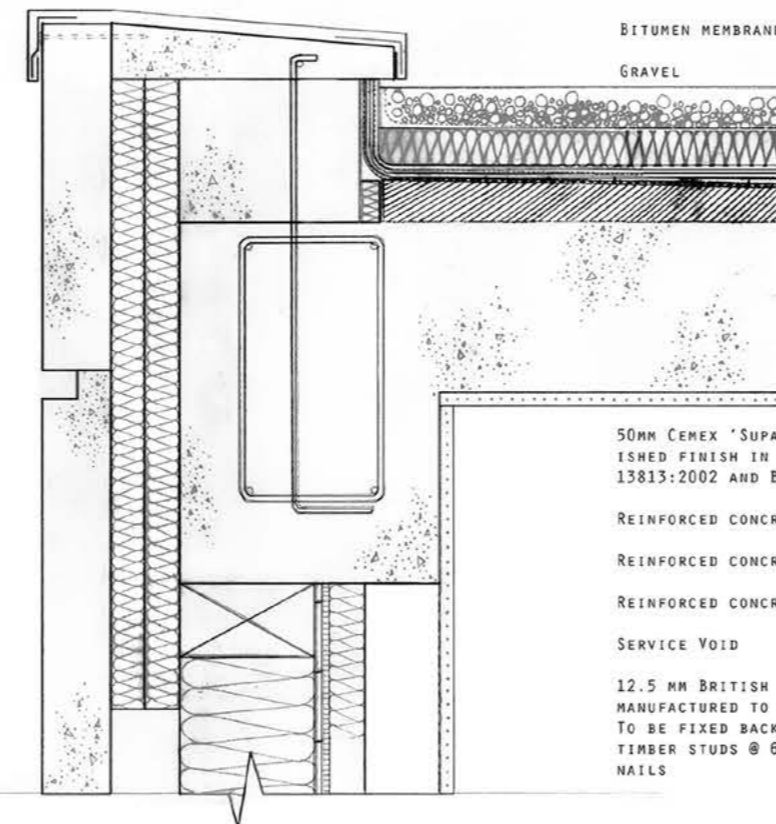
50MM KINGSPAN KOOLTHERM K12 FRAMING BOARD. THE PRODUCT SHALL BE MANUFACTURED UNDER A MANAGEMENT SYSTEM CERTIFIED TO BS / I.S. EN ISO 9001: 2008, BS / I.S. EN ISO 14001: 2004 AND BS / I.S. OHSAS 18001: 2007; BY KINGSPAN INSULATION LIMITED; AND INSTALLED IN ACCORDANCE WITH THE INSTRUCTIONS ISSUED BY THEM.

GEOTEXTILE MEMBRANE: BS EN 14475:2006 EXECUTION OF SPECIAL GEOTECHNICAL WORKS - REINFORCED FILL; BS 6031:2009, BS 8006-1, BS EN 13253:2001 AND BS EN 15581:2008

100 MM EXTRUDED POLYSTYRENE INSULATION: KINGSPAN STYROZONE BS 6399-3: 1988 EN ISO 9001: 2000.

BITUMEN MEMBRANE: SUPERSEDES BS 8217:2005

GRAVEL



50MM CEREX 'SUPAFLO' SCREED WITH A POLISHED FINISH IN COMPLIANCE WITH BS EN 13813:2002 AND BS 8204: PART 7.

REINFORCED CONCRETE

REINFORCED CONCRETE BEAM SUPPORTING

REINFORCED CONCRETE COLUMN

SERVICE VOID

12.5 MM BRITISH GYPSUM GYPROC WALLBOARD MANUFACTURED TO COMPLY WITH EN 520: 2004. TO BE FIXED BACK TO TIMBER STUDS @ 600MM CENTRES USING SPAX NAILS

2. CONCRETE CLADDING DETAIL 1:5

100MM SOLID SYNSTONE CUSTOM 3000X1500MM PANELS, SMOOTH MATTE FINISH, COLOUR: 920 SMOKE. TO BE SUPPLIED AND INSTALLED AS PER THE MANUFACTURER'S LATEST PUBLISHED DATA.

100MM KINGSPAN KOOLTHERM K15 RAINSCREEN BOARD; BY KINGSPAN INSULATION LIMITED; AND INSTALLED IN ACCORDANCE WITH THE INSTRUCTIONS ISSUED BY THEM. BREAKS IN INSULATION TO BE SEALED USING BONDALL AQUAPUTTY.

STEEL GIRT, 15 GAUGE J-BAR @ 400MM CENTRES, FIXED TO CLADDING AND CONCRETE BY 5MM CONSTRUCTION SCREWS

10MM STRUCTURAL PLYWOOD BOARD, WICKES, CODE: 110036. FIXED TO TIMBER STUDS PLACED @ 600MM CENTRES USING SPAX NAILS

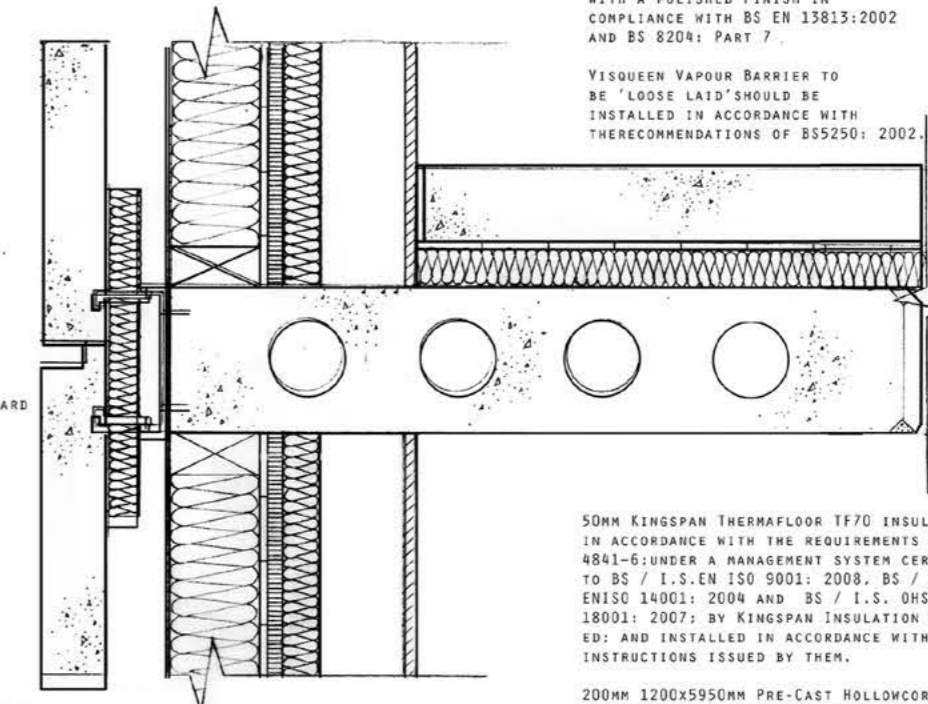
100MM KINGSPAN KOOLTHERM K15 RAINSCREEN BOARD

VISOQUEEN FB VAPOUR BARRIER APPLIED USING A SELF-ADHESIVE; SHOULD BE INSTALLED IN ACCORDANCE WITH THE RECOMMENDATIONS OF BS5250: 2002.

50MM KINGSPAN KOOLTHERM K12 FRAMING BOARD. THE PRODUCT SHALL BE MANUFACTURED UNDER A MANAGEMENT SYSTEM CERTIFIED TO BS / I.S. EN ISO 9001: 2008, BS / I.S. EN ISO 14001: 2004 AND BS / I.S. OHSAS 18001: 2007; BY KINGSPAN INSULATION LIMITED; AND INSTALLED IN ACCORDANCE WITH THE INSTRUCTIONS ISSUED BY THEM.

SERVICE VOID

12.5 MM BRITISH GYPSUM GYPROC WALLBOARD MANUFACTURED TO COMPLY WITH EN 520: 2004. TO BE FIXED BACK TO TIMBER STUDS @ 600MM CENTRES USING SPAX NAILS



50MM CEREX 'SUPAFLO' SCREED WITH A POLISHED FINISH IN COMPLIANCE WITH BS EN 13813:2002 AND BS 8204: PART 7

VISOQUEEN VAPOUR BARRIER TO BE 'LOOSE LAY' SHOULD BE INSTALLED IN ACCORDANCE WITH THE RECOMMENDATIONS OF BS5250: 2002.

50MM KINGSPAN THERMAFLOOR TF70 INSULATION IN ACCORDANCE WITH THE REQUIREMENTS OF BS 4841-6 UNDER A MANAGEMENT SYSTEM CERTIFIED TO BS / I.S. EN ISO 9001: 2008, BS / I.S. EN ISO 14001: 2004 AND BS / I.S. OHSAS 18001: 2007; BY KINGSPAN INSULATION LIMITED; AND INSTALLED IN ACCORDANCE WITH THE INSTRUCTIONS ISSUED BY THEM.

200MM 1200X5950MM PRE-CAST HOLLOWCORE SLAB REINFORCED WITH 5MM HIGH TENSILESTEEL CERTIFIED TO BS 5896:1980 BY BISON MANUFACTURING LTD; AND INSTALLED IN ACCORDANCE WITH THE INSTRUCTIONS ISSUED BY THEM.

EXPLORATION BY HAND

Developing my ideas and concepts by hand using models, and sketching techniques is a very important design process to me.

This is a collage of various hand techniques i have explored.



HELP
LESS



IMAGE 8

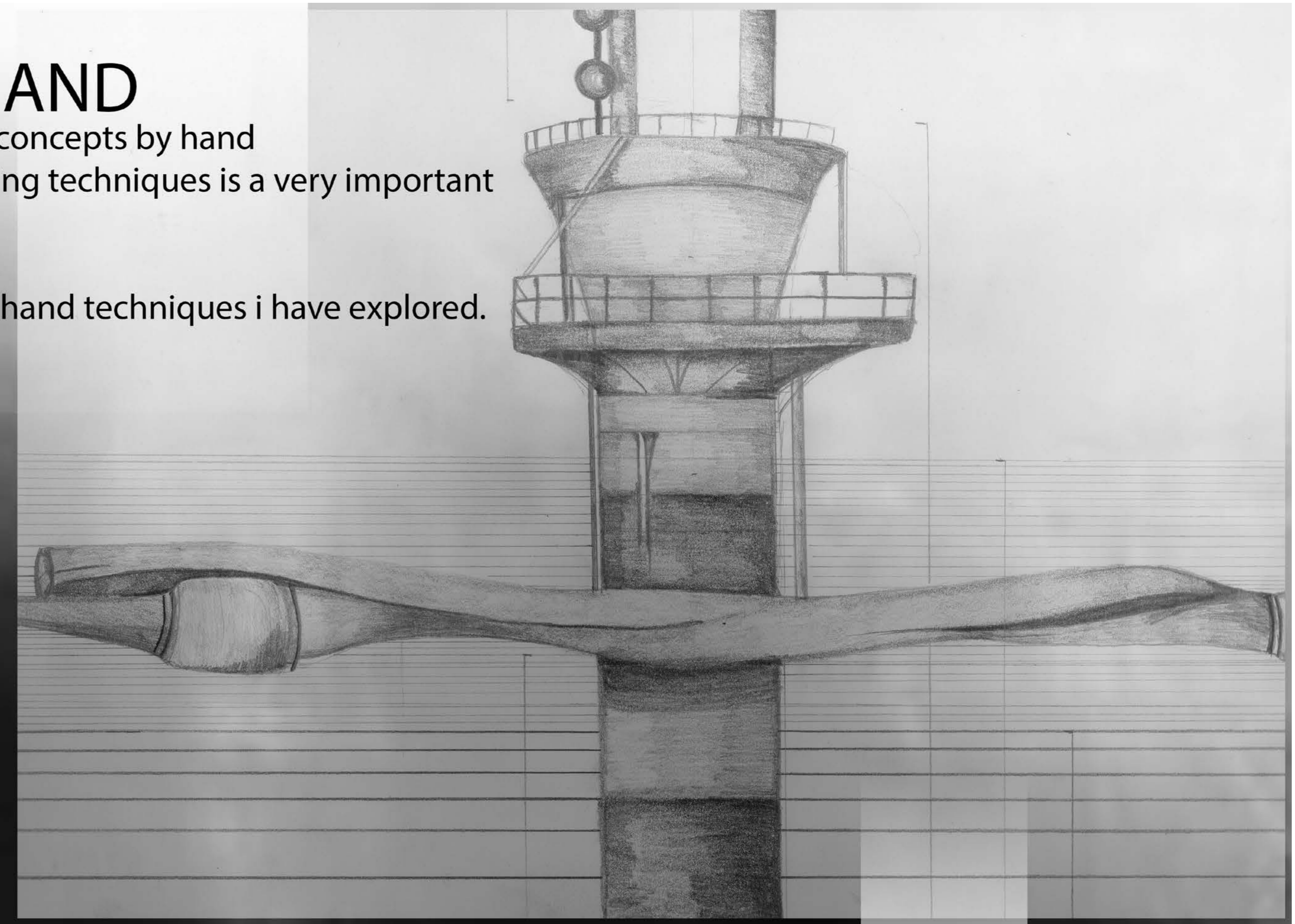
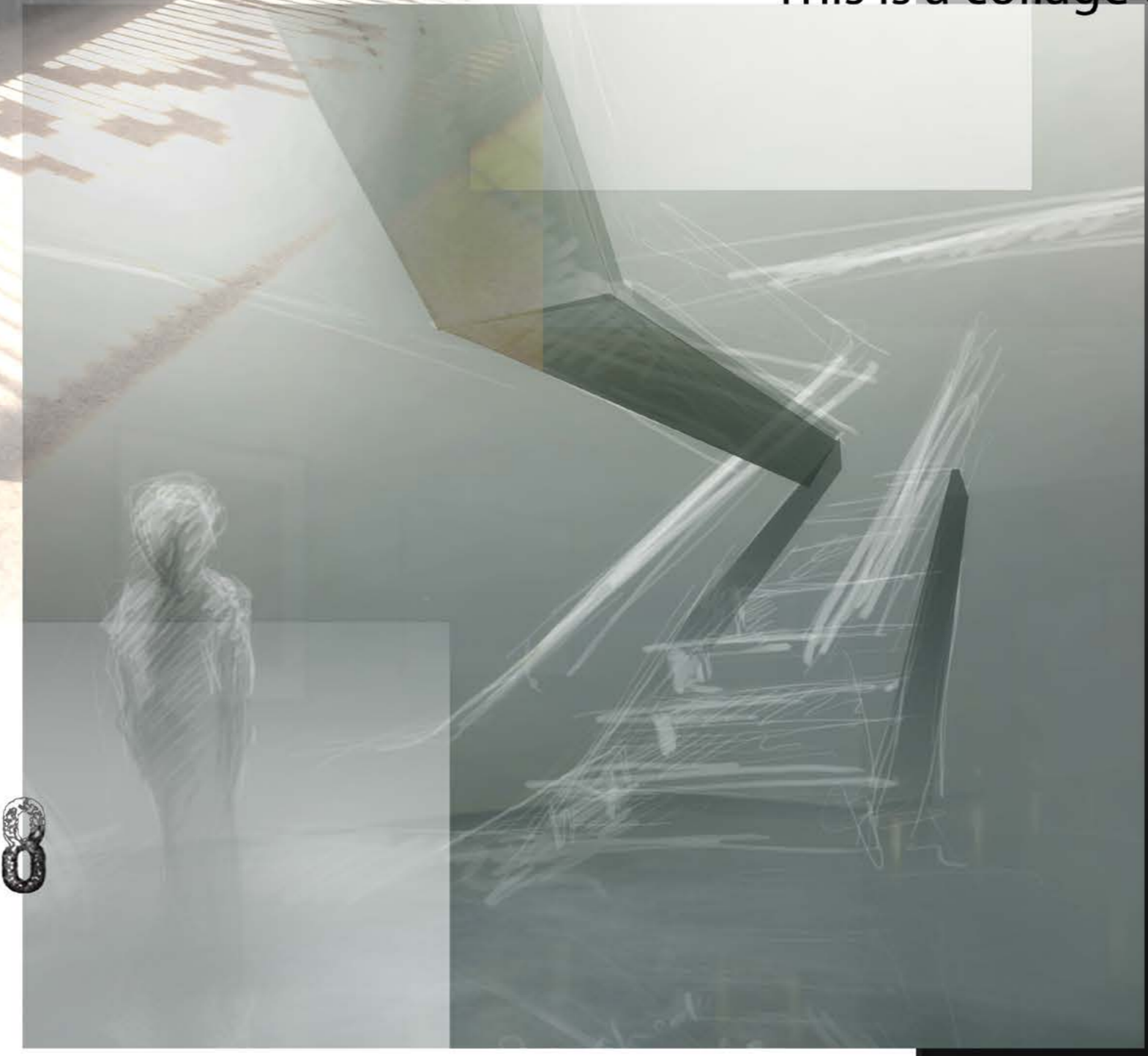


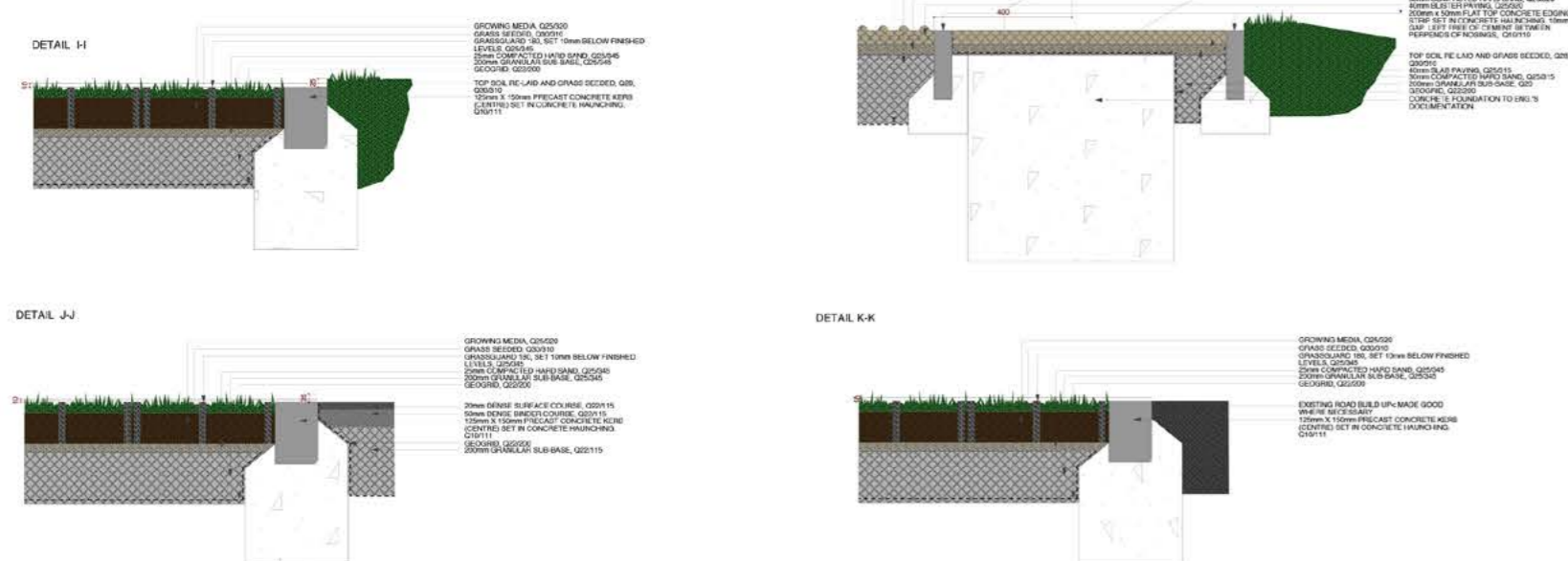
IMAGE 10

PART ONE

Lyster Grillet and Harding are an Architecture firm that specialise in Educational Architecture

I have been working on Gateway Free Primary School, producing production information drawings for work stage K and also modeling the proposed building for marketing material within LGH.

Landscaping details

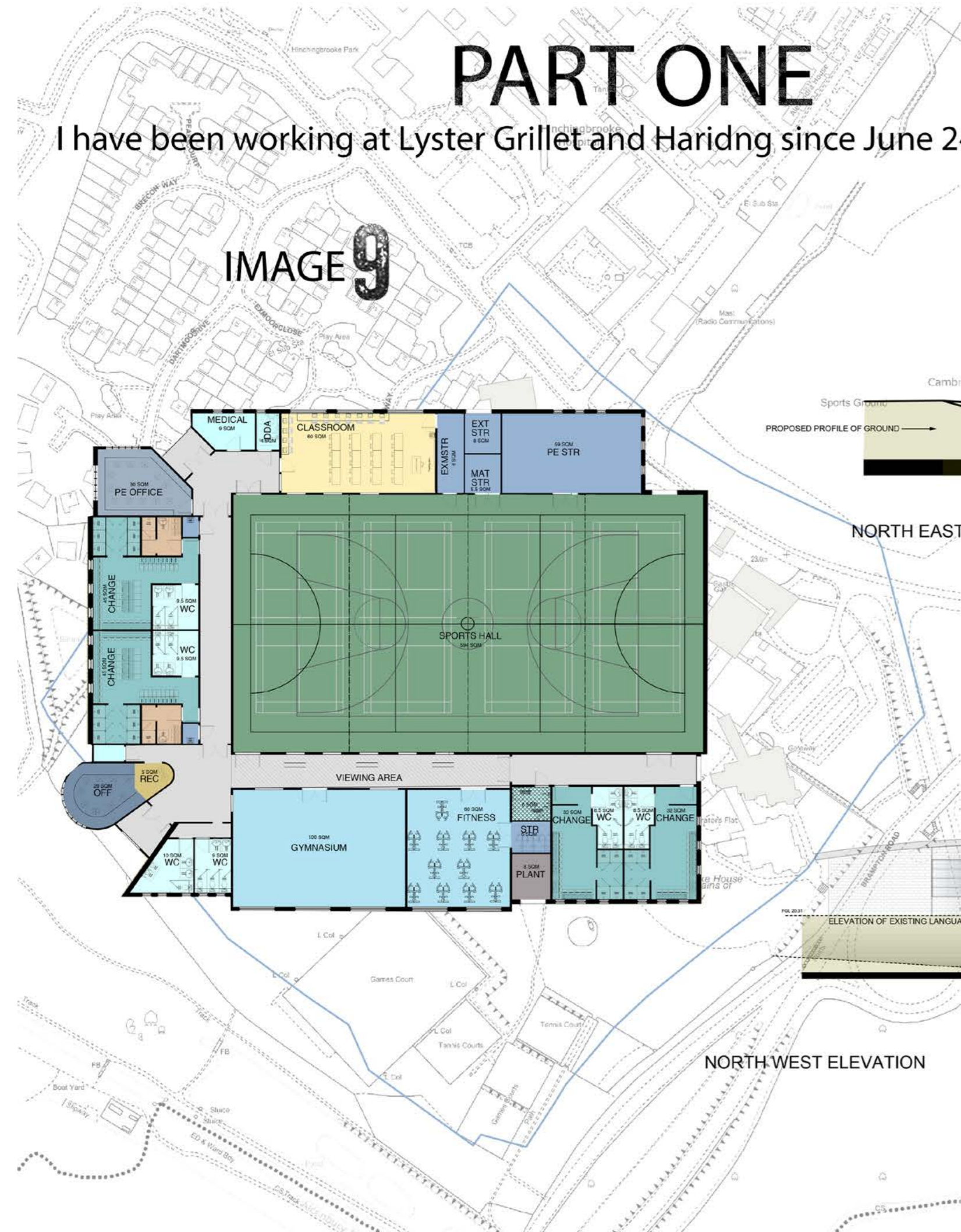


PART ONE

I have been working at Lyster Grillet and Harding since June 24 2013

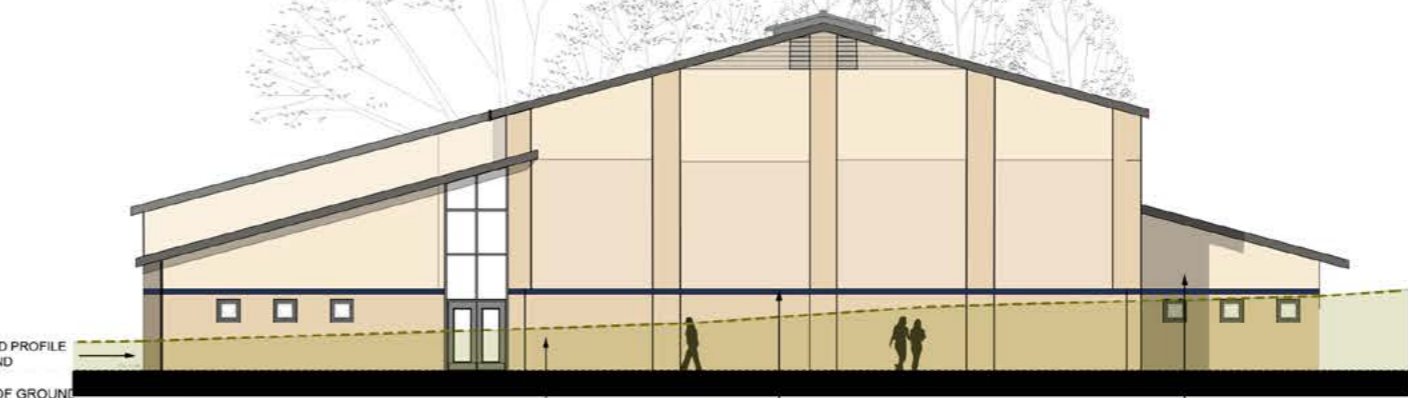
IMAGE 9

Below is an example of planning documentation that I have produced for Hinchingsbrooke School. I have worked on work stages A-D for this project, working up the design, concept and drawings.



NORTH EAST ELEVATION

NORTH WEST ELEVATION



CONCEPTUAL 3D VISUAL

Lyster Grillet & Harding Architects 1 Theobalds Place Cambridge CB2 1TB 01223 361626 01223 360964 lgh@lgharchitects.com www.lgharchitects.com Copyright © 2013 Lyster Grillet & Harding	The Hinchingsbrooke School Huntingdon Date: 19/12/13 Scale: LW 1:100 @ A1 1:200 @ A3	The Governors of Hinchingsbrooke School Building + drawing title Proposed Sports Hall Elevations	Job title: Design Development Drawing status: Planning Job no.: 1986 D00 0014 Revision: A
			Job title: Design Development Drawing status: Planning Job no.: 1986 D00 0014 Revision: A



Lauren Alexandra Ignatious Ward

Liverpool Univeristy MArch
Application 2014-2015